

CRIBB CONSULTING ENGINEERS, P.C.
3809 Peachtree Avenue, Suite 201
Wilmington, N.C. 28403
Phone: 910.793.5909 Email: ccenpc@bellsouth.net

WALSH ARCHITECT
INCORPORATED
PO BOX 541, NEWBERN, NC 28563
252.636.9878 252.636.9920(FAX)

UNC-Wilmington

601 South College Rd.
Wilmington, NC 28403

Dobo Hall
Chemistry Lab 121
Renovation

UNCW

601 South College Road
Wilmington, NC 28403
910-962-3000
www.uncw.edu

Revisions	
No.	Date

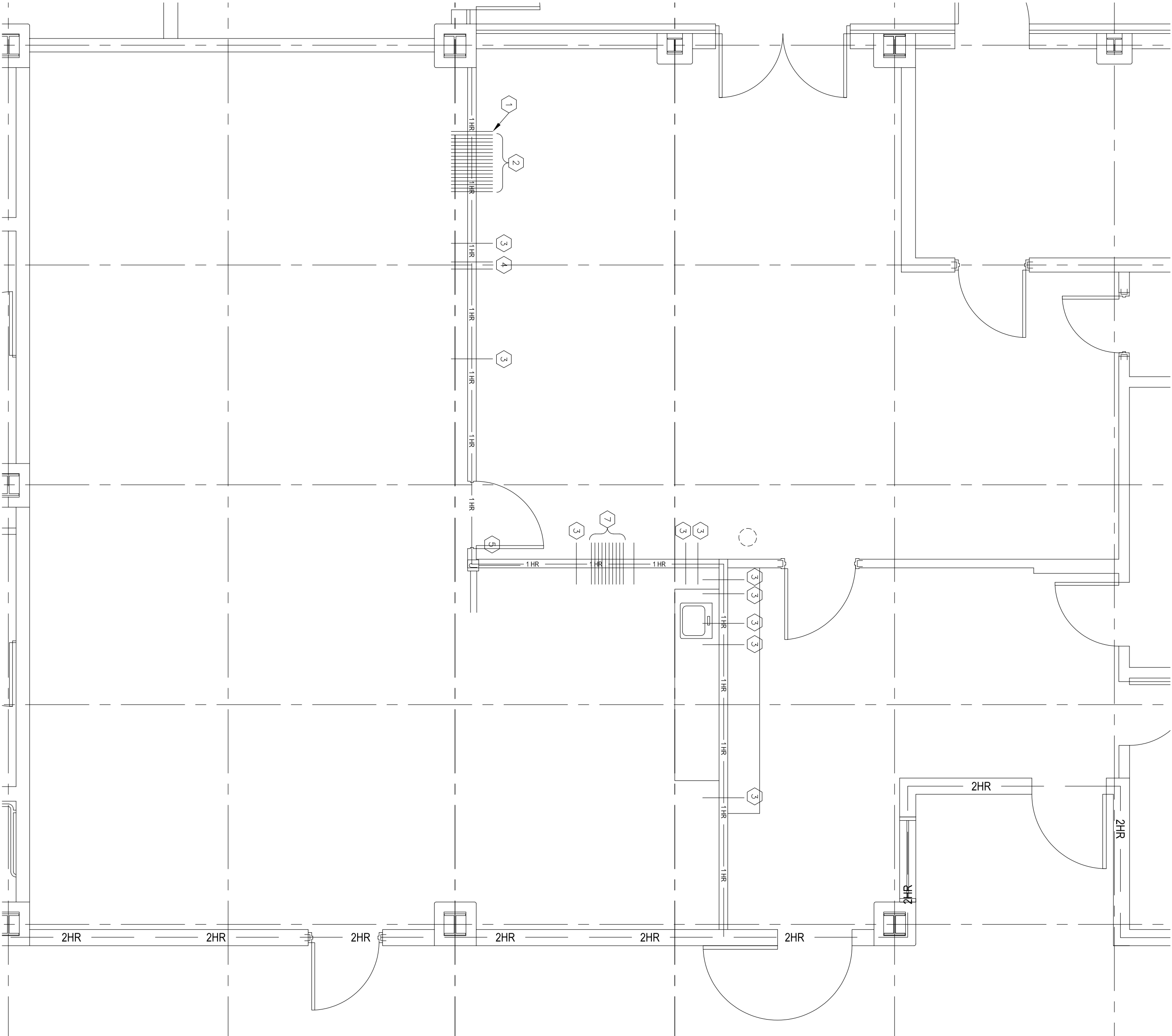
Project Number
0414
Date
3/21/2005
Drawn
HGH
Checked
WAC

Scale
As Noted
Drawing Title
Electrical
Power Plan
Chemistry Lab 121

Sheet Number
3 of 4
Drawing Number

E-102

RECORD DRAWING
This drawing is revised to show construction conditions in place based on mark-up drawings provided by the Contractor utilizing methods of reasonable practice and care. Field verification by the Engineer was not provided.
Date: _____
By: _____

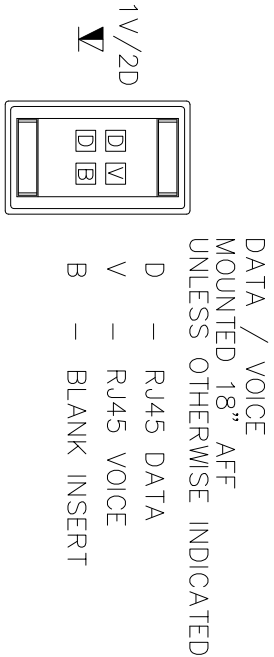


B Conduit Penetration Plan
1/4"=1'-0"

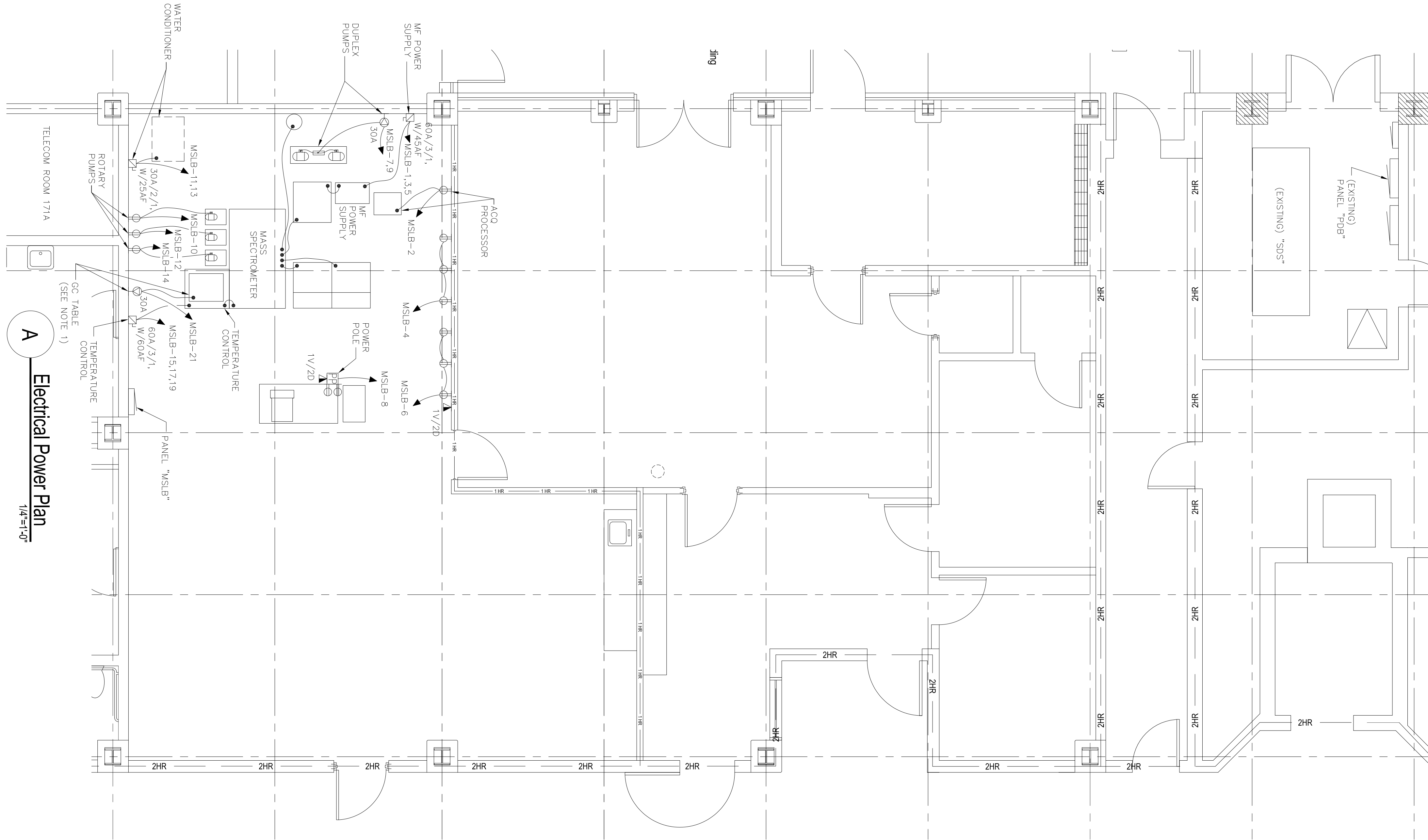
Rated Wall Penetrations - Electrical	
1	#8 BARE COPPER GND
2	3/4" CONDUIT (QTY 18)
3	3/4" CONDUIT
4	2" CONDUIT (QTY 2)
5	6x6 JUNCTION BOX, 3/4" CONDUIT (QTY 3)
6	3/4" CONDUIT (QTY 10)
7	3/4" CONDUIT SLEEVE

Note:
1. SOME EXISTING PENETRATIONS HAVE FIRE STOP MATERIAL (F.S.M.). CONTRACTOR SHALL CONFIRM THAT EXISTING PENETRATIONS THAT CONTAIN F.S.M. ARE COMPLETE. CONTRACTOR SHALL VERIFY THAT ALL PENETRATIONS SHALL BE RE-WORKED TO MEET PROPER RATING.
2. ALL PENETRATIONS MAY NOT BE SHOWN ON DRAWING AND IS THE RESPONSIBILITY OF THE CONTRACTOR TO VERIFY QUANTITIES AND TYPES.

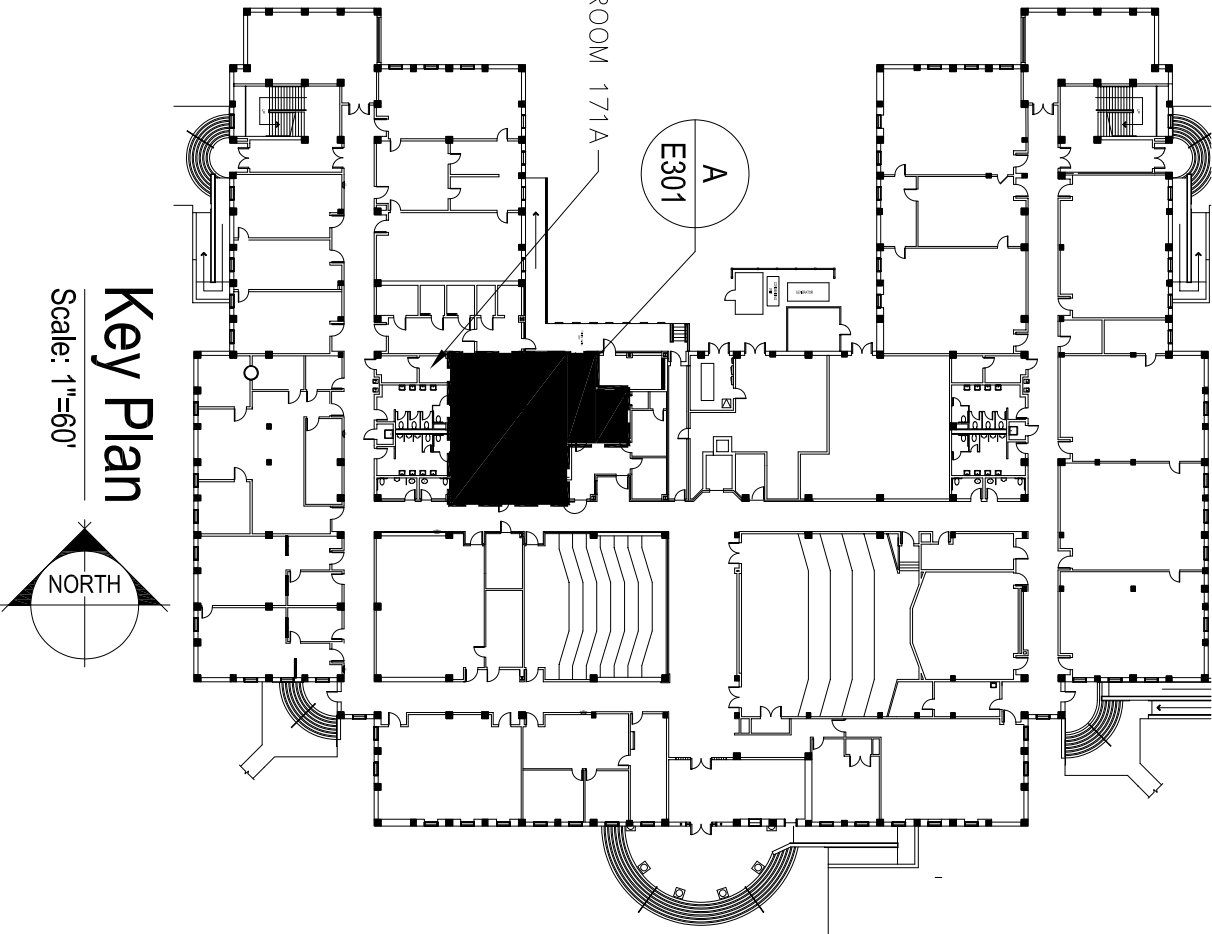
C TYP DATA/VOICE Box Layout
NOT TO SCALE



Telecom Note:
1. VOICE AND DATA CABLE SHALL BE ROUTED IN 1" CONDUIT FROM EACH VOICE/DATA LOCATION TO TELECOM ROOM 171A.



A Electrical Power Plan
1/4"=1'-0"



Key Plan
Scale: 1"=60'